



20
24

FOCUS

Your Relocation to the UK
Our Know-How

ABOUT US

In over **40 years of FOCUS history**, we have established ourselves as **leaders in settling-in services**, assisting assignees from global corporations in transforming their settlement in the UK into a smooth, engaging, and positive experience.



Our membership programmes are crafted to cater to individuals across all levels of the corporate hierarchy, **providing support to managers, directors, and C-suite executives** alike. Our aim is to help them settle in the UK as quickly as possible, promoting their **well-being, mental health, and facilitating a positive and productive experience in the UK.**

PILLARS OF FOCUS SERVICES

ADVISORY SERVICES

1.

Advisory services offer newcomers information about the local culture, helping them **understand and navigate the nuances of daily life in the UK.**

We assist assignees in **building a social network**, which is essential for a **sense of belonging and well-being**. We facilitate the **development of friendships and a sense of community**, **reducing stress from isolation and lack of social engagements.**

2.

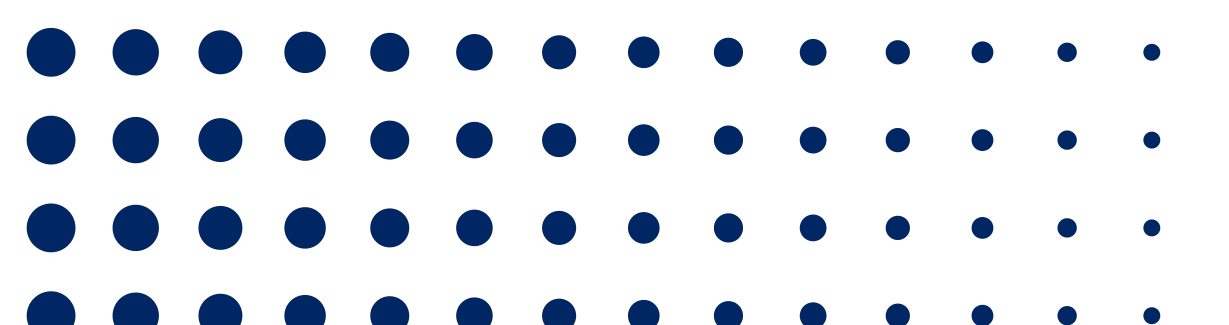
WEBINARS & LIVE EVENTS

THE CAREER HUB

3.

The Career Hub provides personalised learning experiences, designed by career experts, to help assignees or their partners succeed in the UK business world.

This support aims to **reduce stress, promote a healthy work-life balance, improve productivity, and enhance job satisfaction.**



IN 40 YEARS
WE WORKED WITH





FOCUS

MEMBERSHIPS



FOCUS MEMBERSHIPS



- 1 Select a membership for your employees.
- 2 Members are enrolled right away, regardless of whether they are currently in the UK or not.
- 3 Enrolling your employee means that their membership is now valid for their entire family, which is a fantastic benefit for everyone involved.
- 4 Members get access to our services available online and in-person.
- 5 Depending on membership type, members can attend events hosted by FOCUS and our partners.



< Membership is valid for 1 year >



FOCUS MEMBERSHIPS

	GOLD	EMERALD	DIAMOND
Relocation & Living in the UK Advice	✓	✓	✓
Career Hub	✓	✓	✓
Webinars and Workshops	✓	✓	✓
Sponsored FOCUS Events	✓	✓	✓
Magazine	✓	✓	✓
FOCUS Social & Business Club	✗	✓	✓
Annual FOCUS Gala	✗	✓	✓
FOCUS Plus	✗	✗	✓
	 £480	 Save 10% £850 £780	 Save 15% £2,220 £1,880

All prices are ex. VAT

WEBINARS & WORKSHOPS

All members can access our extensive schedule of webinars and in-person workshops.

Becoming a Confident Networker & Mastering Your Elevator Pitch

FOCUS
presents



WEBINAR



Nutrition and Wellbeing Strategies for Better Focus, Energy and Productivity

FOCUS
presents



WEBINAR



Top Tips for living in the UK

FOCUS
presents



WEBINAR

LIVE EVENT

THE POWER OF LINKED in
with Professional Photoshoot

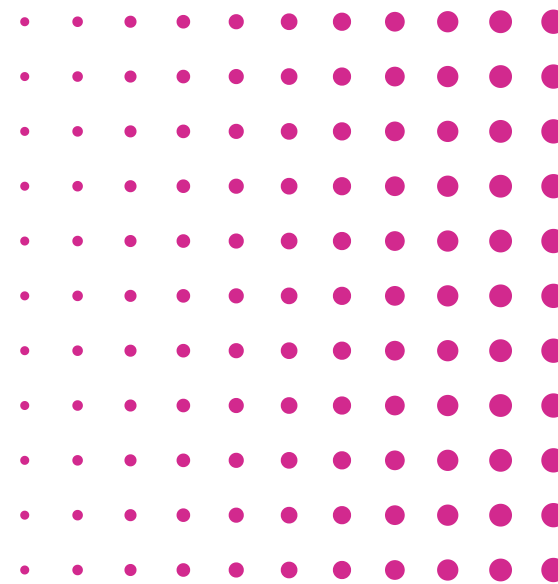
FOCUS
presents



Thu 27 April
@ 18:30 - 20:00

Members - FREE
General Admission - £10

8-9 Soho Square, London, W1D 3Q



SPONSORED EVENTS

All members have access to events supported by our esteemed business partners.

UK Immigration Law & Visa Tips + Foreign Currency Exchange Best Practices

FOCUS
in partnership with
SGD **halo** financial
foreign exchange services, professionally delivered
present



WEBINAR

FOCUS
Presents
TATE MODERN HIGHLIGHTS

Sponsored by:


International School of London



PRIVATE TOUR

ART. ANTIQUES. COLLECTIONS
LAPADA
— BERKELEY SQUARE FAIR —
27 SEPT - 1 OCT 2023

FOCUS
presents



ART FAIR

Unforgettable Maritime Adventure!
@ HMS Belfast


Sponsored by




CULTURE

CHRISTMAS AT KEW GARDENS

Enter a botanical world filled with seasonal cheer...



TASIS
THE AMERICAN SCHOOL IN ENGLAND
Sponsored by

FOCUS

in collaboration with
 **ROYAL COLLEGE OF MUSIC**
London



Don Giovanni
Terrorio
BY GIUSEPPE GAZZANIGA

OPERA

FOCUS SOCIAL & BUSINESS CLUB

**Emerald & Diamond
Members**

£370

FREE



- ✓ **4 Events / Year**
- ✓ **Social Gatherings**
- ✓ **Business Networkings**
- ✓ **Exclusive Events**



ANNUAL GALA



FOCUS PLUS

Diamond
Members

£1,740

FREE

Choice of
1x FOCUS Plus
service

CULTURAL TRAINING

- 1 Day
- For the entire family
- Introduction to British Culture
- Everyday & family topics
- British business culture
- communication styles & personal action planning
- Problem solving model
- How to deal with misunderstandings & tensions

SCHOOL SEARCH

- For up to 2 children
- Researching and creating a tailored shortlist
- Availability of places
- Admissions information, catchment areas
- Application forms, deadlines and entrance exams (not including registration fees)
- Liaising with schools and Local Authorities
- Arranging school visits
- Post-visit follow up as decisions are made

COACHING

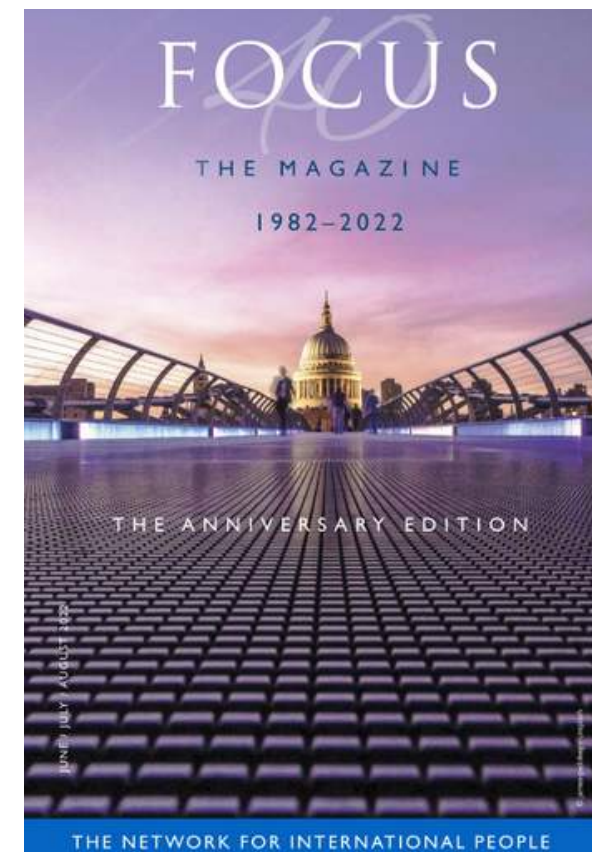
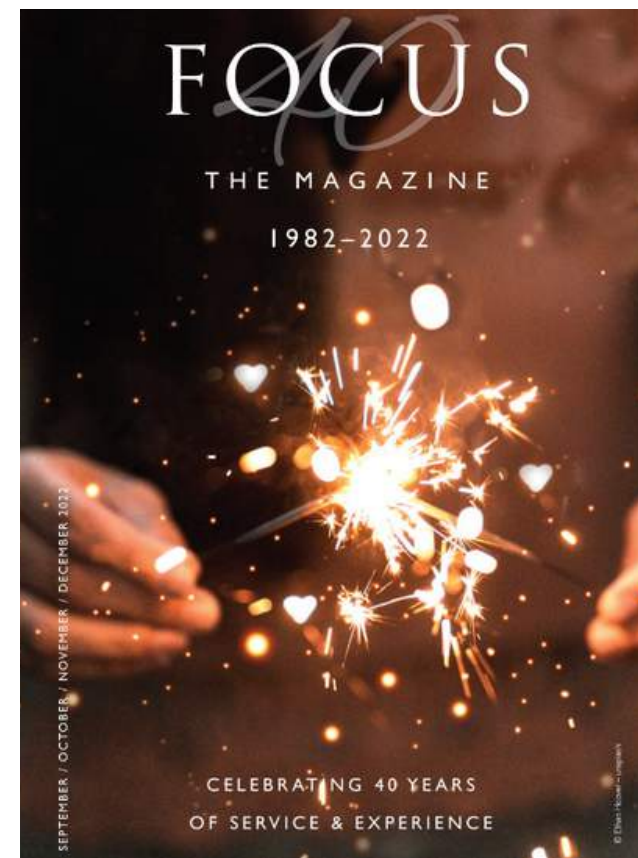
- 6x 1 hour session
- Only verified coaches
- Personal or Career Coaching
- Virtual or F2F
- Tailored Guidance
- Goal Setting and Action Planning
- Self-Discovery and Awareness
- Career Exploration and Transition
- Confidence Building
- Overcoming Challenges

MAGAZINE

ADVERTISEMENT

FOCUS Magazine offers access to a vast network of individuals and companies, providing the ideal opportunity to enhance your brand awareness, generate more leads, and strengthen your positioning

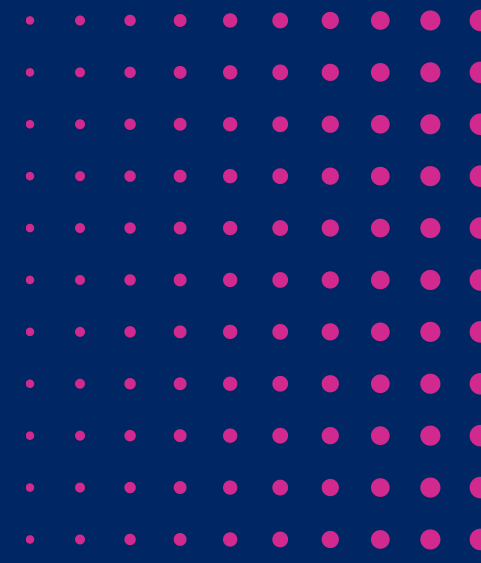
- ✓ 15,000 Reach
- ✓ 100 Corporate Distributions
- ✓ 2,000 Hard Copies
- ✓ 3,000 Online Readers/Month





FOCUS

CAREER HUB



CAREER HUB

Powered by

iNOMEE

Authorized Partner
EVERYTHING DiSC
A Wiley Brand

ABOUT

Our bespoke coaching programmes will help spouses, partners to accelerate their job search and employees to reach their professional goals faster.

Career Development Programme

Thrive At Work *NEW*

Career Development Programme

Job Seekers

Career Development Programme

Career Change *NEW*

WHAT IS INCLUDED



2x 1h Coaching
Session With a Career
Expert



Award Winning
Personality Test



Strategic
Action Plan



CV & Cover Letter
(UK Tips)



Dos and Don'ts in Doing
Business in the UK

and much more...

Career Development Programme

Thrive At Work

NEW

This transformative personalised **learning experience is specifically crafted for individuals who have recently moved to the UK with a company.** It caters to those who are navigating a new job and are seeking effective strategies to make a lasting impression in their roles.

The programme aims to assist participants in achieving success by building positive relationships with colleagues and direct reports.

HOW IT WORKS

1

Take the **Everything DiSC** Assessment and learn how to adapt your executive presence and communication style.

Delivery: on-line / 20 minutes

2

Book your one-on-one two "Knowhow60" coaching sessions with a career expert.

Delivery: virtual / 2 x 60 minutes

3

Kick-start your job career progression path. **Delivery: action plan**

WHAT YOU GET



Learn How To Adapt Your Communication Style to Succeed in Your New Job in the UK.



Acquire Confident Executive Presence



Find Strategies on How To Positively Influence Others



Do's and Don'ts in Doing Business in the UK



Award Winning Psychometric Test



Career Development Programme

Job Seekers

This programme is designed for individuals looking to kickstart their career journey.

It includes one-on-one coaching sessions, CV review, interview preparation, and personalised career advice to help you identify your strengths, set goals, and create a strategic plan for career advancement.

HOW IT WORKS

1

Book your two "Knowhow60" coaching sessions with a career expert.
Delivery: virtual / 2 x 60 minutes

2

Kick-start your job search with "100 conversations" challenge.
Delivery: action plan

3

Take the **Everything DiSC** Assessment and learn how to adapt your executive presence and communication style.
Delivery: on-line / 20 minutes

WHAT YOU GET

- ✓ **CV & Cover Letter – UK Tips**
- ✓ **CV – ATS Check**
- ✓ **Best Interview Strategies**
- ✓ **Strong Elevator Pitch**
- ✓ **Do's and Don'ts in Job Search**
- ✓ **Psychometric Test**
- ✓ **Introductions to Recruiters**



Career Development Programme

Career Change NEW

This personalised coaching experience is designed for individuals who are ready to embark on a new career journey.

This programme will help you uncover your strengths, pinpoint areas for development, set attainable goals, and create a strategic plan to kickstart your exciting new career path and enhance your professional journey.

HOW IT WORKS

1

Take the **Everything DiSC** Assessment and learn how to adapt your executive presence and have your skills assessed. **Delivery: on-line / 20 minutes**

2

Book your two "Knowhow60" coaching sessions with a career expert. **Delivery: virtual / 2 x 60 minutes**

3

Kick-start your career change. **Delivery: action plan**



WHAT IS KNOWHOW60

Benefit from a dedicated 60-minute session of personalised career guidance provided by our team of experts. We will address your top priorities and pressing issues. This will encompass **refining your unique management and leadership approach, cultivating a commanding executive presence with confidence, formulating strategies to stand out in your current role,** and fostering the advancement of your career within the UK context.

THANK YOU

FOCUS INFORMATION SERVICES LIMITED

8-9 Soho Square, W1D 3QD, London, UK

www.focus-info.org



Gael Panhelleux
Executive Director

© 2023

